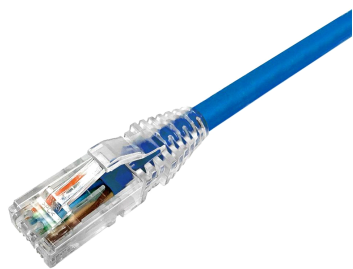


NPC06UVDB-BL



NPC RJ45 Patch Cord, category 6, Unshielded, CM (PVC), Blue

- High-performance patch cords exceeding industry standards supporting NETCONNECT channel specifications
- Standardized transparent, slim-line boots provides consistent patch cord appearance and supports highest density applications
- Colored clips are available to fit the transparent boot, eliminating the need of multiple colors for matching every jacket color
- Colored pull latch tabs are available for easier plug release handling from the modular jack

Product Classification

Portfolio	NETCONNECT®
Product Series	NPC
Product Type	Twisted pair patch cord
Regional Availability	Asia Australia/New Zealand Latin America

Construction Materials

Insulation Material	Polyethylene
----------------------------	--------------

Dimensions

Cord Length, maximum	100 ft 999 in
Cord Length, minimum	1 ft 6 in
Diameter Over Jacket	5.97 mm 0.24 in

Electrical Specifications

ANSI/TIA Category	6
--------------------------	---

Environmental Specifications

Environmental Space	Non-plenum
Flammability Rating	CM
Operating Temperature	-20 °C to +60 °C (-4 °F to +140 °F)
Relative Humidity	Up to 93%, non-condensing
Safety Standard	UL 1863

General Specifications

Cable Type	U/UTP (unshielded)
Interface, connector A	RJ45 plug
Interface, connector B	RJ45 plug
Jacket Color	Blue

NPC06UVDB-BL

Interface Feature, connector A	Standard
Interface Feature, connector B	Standard
Package Quantity	1
Pairs, quantity	4

Mechanical Specifications

Conductor Type	Stranded
Conductor Gauge, stranded	24 AWG
Material Type	PVC
Plug Insertion Life, minimum	750 times
Wiring	T568B

Regulatory Compliance/Certifications

Agency	Classification
RoHS 2011/65/EU	Compliant
RCM	Compliant to electrical safety, EMC, EME & telecommunications requirements



Included Products

CC8862744/BU | CC6CM BLU 4/24 SR U/UTP RL BULK (Product Component—not orderable) — CC6CM Category 6 U/UTP Cable, non-plenum, blue jacket, 4 pair bulk length reel

6-2843007-1 | MP-6AU-Plug-A-1 — Modular Plug, Category 6A/6, Unshielded, Cond Insulation OD - 0.99mm, 100 pcs

2843020-3 | MP-6AU-Boot-59-1 — Integrated Boot and Pair Manager for MP-6AU, size 59, transparent